



CLARCOR Air Filtration Products
 P.O. Box 32578
 Louisville KY 40232
 Customer Care Team 1-866-925-2247
 Fax 1-800-784-3458

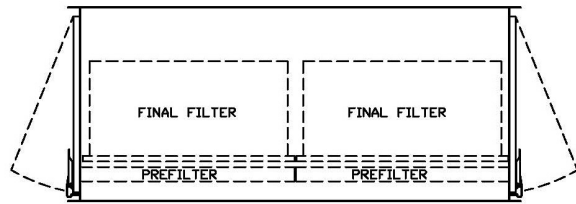
ASHRAE SIDE ACCESS FILTER HOUSING (ASA)

DATE _____

APPROVED APPROVED AS NOTED

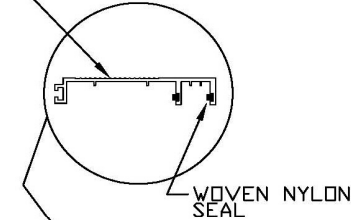
SIGNATURE _____

MODEL NUMBER _____



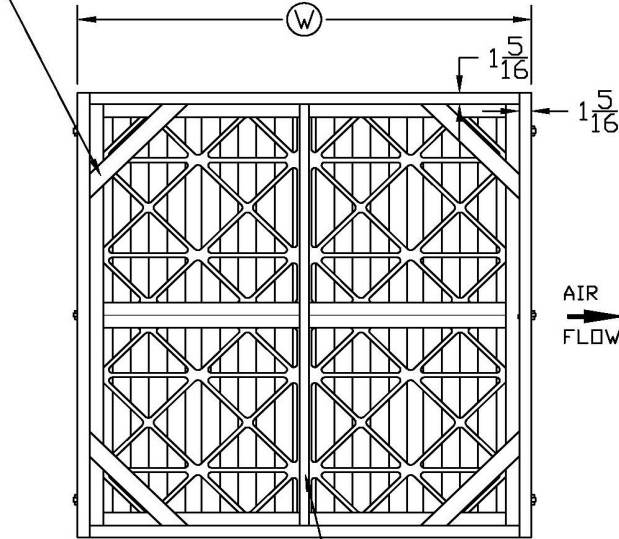
TOP VIEW

EXTRUDED ALUMINUM
 FILTER TRACK
 2" OR 4" PREFILTER
 WITH A 1" HEADER FILTER



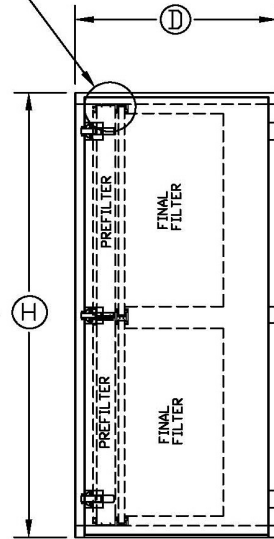
WOVEN NYLON
 SEAL

CORNER GUSSETS
 (UPSTREAM ONLY)



UPSTREAM VIEW

AIR
 FLOW



DOOR VIEW

PREFILTER DEPTH (SELECT ONE)
 A = 2" Prefilter w/ 1" Final Filter Track
 B = 4" Prefilter w/ 1" Final Filter Track

HOUSING DEPTH (SELECT ONE)
 2 = 22-1/4" Depth (D)
 3 = 33-1/4" Depth (D)
 4 = 42" Depth (D)

DIMENSIONS HxW (SELECT ONE)

 H = Height (Inches)

 W = Width (Inches)

MATERIALS (SELECT ONE)
 CA = 16 GA Galvanized Steel
 CB = 16 GA 304 Stainless Steel

- FACTORY OPTIONS
- WC = Weathercap
 - DW = Double Wall Insulation (Includes Weathercap)
 - LL = Lifting Lugs, (4) Lugs Total
 - DF = Drilled Flanges single / double
 - BA = Bottom Access
 - VF = Vertical Flow
 - SP = Static Pressure Ports, (2) Pair for Pre and Final Filter
 - SG = Static Pressure Gauge Not Installed (2 Gauges)
 - SI = Static Pressure Gauge Installed (2 Gauges/Pair of Ports)
 - T = Transition
 - O = Other (Specify on Submittal or Attachment)

- SPECIFICATIONS
1. 16 GA Material Construction.
 2. Extruded Aluminum Filter Tracks with Woven Nylon Pile Seal.
 3. Doors Sealed with Closed Cell Neoprene Gasket.
 4. Two Pound Density Urethane Foam Inside Access Doors Gaskets Filters.
 5. Metal to Metal Components Sealed with Silicone Compound.
 6. Doors Fitted with Quick Action, Positive Pressure Trip Lock Latches.
 7. Doors on Both Sides.
 8. Maximum Static Pressure 4.0" W.G. Positive or Negative

HOUSING DIMENSIONS
 # FULL SIZE FILTERS
 # HALF SIZE FILTERS
 RATED AIR FLOW (CFM) @ 500 FPM